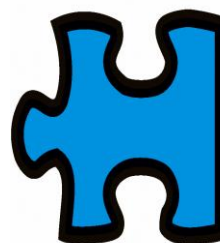


Health & Social Care Update



GWENT
ASSOCIATION OF
VOLUNTARY
ORGANISATIONS

Charity Reg No. 1113558
(Est. 1927)

Company Limited By Guarantee 5590517

Issue 10 – August 2011

Supporting Communities to Grow

A new programme to help people set up and manage growing schemes in the heart of their community has been launched across Wales by the Federation of City Farms and Community Gardens (FCFCG). Called Tyfu Pobl (Growing People), is funded through the Rural Development Plan for Wales 2007-2013, which is itself funded by the Welsh Government and the European Union.

The three year programme will support a variety of schemes, including community farms, allotments, community gardens, community orchards and Community Supported Agriculture schemes

The Welsh Government programme will ensure that community groups don't work in isolation – local people will be encouraged to share their knowledge and expertise so that connections between new and well-established growing schemes are created throughout Wales.

A new development team is already in place, with regional offices in Cardiff, Pembrokeshire, Newtown and Bangor (contact details below). Meanwhile a Community Enterprise and Funding Coordinator to work with groups so they become more financially sustainable, less grant reliant. The Coordinator will assist with the sourcing of appropriate funding.

As part of the programme, local growing groups will benefit from support and advice from the development team as well as fieldworkers drawn from existing groups and allotments mentors. A travel bursary scheme will also be available so

groups can visit each other's sites and regional meetings to enable local growers and gardeners to meet up, learn new skills and swap ideas and inspiration.

Official launch events will take place on 23 and 24th of September 2011 at Green Meadow Community Farm in Cwmbran. This will kick start the new autumn programme of regional gatherings and training events. Training will be delivered around four main areas; sustainability, social inclusion, the setting up of a community growing project and the creation of community growing spaces for land owners. For more information please contact the team on the number below; South East Wales (Cardiff) Office Tel: 0292 0225942

Rural Health Week 18th to 24th Sept 2011
The theme will be: "Achieving Rural Health and Wellbeing - Responding to a changing world"

As part of the week, a conference is being organised on behalf of the Welsh Government at Gregynog, near Newtown on September 20th titled "Rural Health Innovation – Sharing and Adopting the Learning". The event will celebrate the achievements and learning from the Rural Health Innovation Fund projects.

Examples of people and agencies working together to cross boundaries to do things differently to improve health and social care outcomes will be profiled during the week. A database of good practice in rural health and well being can be found at; www.ruralhealthgoodpractice.org.uk

Please contact Kathy at kathyb@irh.ac.uk if you are interested in attending.

Training & Resources

Barnardos' Toolkit

Barnardos Cymru are carrying out training on the Barnardos' Toolkit which was developed to help staff identify safeguarding issues, carry out risk assessments and make appropriate referrals to social services. The training is a half day session and there are four sessions available.

There will be up to 20 delegate places for each session and places will be reserved on a first come first served basis, 80 places in total.

Monday 19th September morning or afternoon - training is going to be held at the Civic Centre, Pontllanfraith.

Monday 26th September morning or afternoon – training is going to be held at Enterprise House, Tiryberth, Tiryberth Industrial Estate, Tiryberth, Hengoed.

Please contact Karen to request places on the training; **Tel: 01633 876415, Mobile: 07980682412**
or E-Mail Karen.jones2@torfaen.gov.uk

Parenting Skills Course for people with Learning Disability

Caerphilly People First are organising parenting skills sessions at the YMCA in Bargoed. There will be 10 sessions starting on September 29th through to December 9th. All sessions will start at 1.00pm and finish at 4.00pm. People on the course will have the opportunity to experience caring for a virtual baby. The course will also focus on other aspects of parenting including relationships, the practical issues in looking after a baby or young child etc. The sessions are targeted ideally at those people who have not yet become parents. For more information and to book a place please contact Tracey Drew on 07736285031

Pfizer UK Foundation

The Pfizer UK Foundation was established in 2005 to address health inequalities across the UK arising from social, economic, cultural and demographic factors. It supports community based projects that tackle health inequalities in England, Northern Ireland, Scotland and Wales, which fall outside core NHS statutory funding. The aim is to support projects providing tailored, innovative, modest and local solutions to needs defined by local healthcare and social care experts, community groups and charities.

Applications are assessed three times per year and grants are offered between £3,000 and £50,000. For more information email pfizerukfoundation@pfizer.com or telephone 01737 330713 or visit the Pfizer UK Foundation website

The Millennium Stadium Charitable Trust

The Trust will give priority to organisations that are looking to tackle social, personal, economic or cultural barriers within their own communities. In particular projects that lead to greater independence and give people more control over their lives will be given priority. The Trust welcomes applications that give people a voice to express their needs and hopes. The Trust is keen to help disabled people to challenge barriers and to be active and visible in their local communities

The Trust has decided to make grants in the following four Programme areas; sport, the arts, the environment and the community Funding Levels are set for regional and local organisations and is dependent on the geographical areas they cover. The maximum grant for local organisations is £2,500 and for those organisations covering a whole borough or region it will be £7,500.

Organisations are advised to read the guidance thoroughly before submitting a postal bid. There will be a word count.

For 2011 Grants the scheme will be open from **Tuesday 1st November 2011 until Monday 19th December 2011** to receive applications for **local** projects. The Trustees will meet early March 2012 to award funding to local projects for an April 2012 start.

The scheme deadline has been extended to **Thursday 15th September 2011** to receive applications for **regional applications**. The Trustees will meet 21st November to award funding to regional projects. Therefore projects need to be starting after January 2012. All the information required to complete an application can be found at <http://www.millenniumstadiumtrust.co.uk>



Adult Social Care Law Reform

The Older People's Commission for Wales held a series of workshops to look at Adult Social Care Law and a report has just been produced and is available the following link on their website

<http://www.olderpeoplewales.com/en/publications/social-care.aspx>



Have Your Voice Heard



Would you like to become a media spokesperson and speak directly to the media about your experiences as an older person? The media often contacts the Older People's Commission for Wales to talk to older people about their experiences on certain topics or issues arising in their locality.

The Commission will keep people's contact details on record in case a relevant topic comes up that spokespeople would like to talk about. Please contact ask@olderpeoplewales.com and put spokesperson in the subject line of your email

Progress Update-Gwent Frailty Programme

Operations commenced in April 2011 and the Community Resource Teams across Gwent have now been established. All referrals are now directed through a single point; vantage Point House Cwmbran and aligned with GP out of hours services. Over 2,500 referrals were received between April and June. An alternative Falls Pathway has been agreed with the Welsh Ambulance Service which started in June 2011. This is intended to reduce unnecessary transportation of patients to A and E departments. Appropriate follow up in the community is being provided.

A milestone report aimed at sharing the learning so far will be produced in August 2011 with a report submitted to the Welsh Government in October 2011. For more information go to www.gwentfrailty.org.uk

Call for Robust, Third Sector, Data Sets

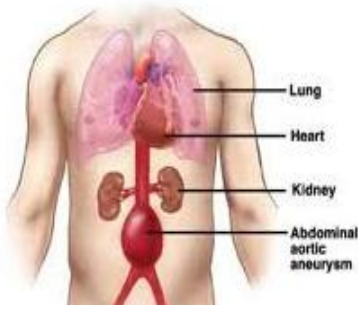
The **Daffodil** website provides a new care needs projection system for Wales, available as a resource for all those working in health and social care. It is a free facility which is designed to help planners and providers make decisions about health and social care provision based on projections of population growth and the prevalence of certain health conditions.

Daffodil holds hundreds of data sets of information which in the past were only available from many different sources. However the site is also work in progress and **Daffodil** host's the Institute of Public Care are keen to further populate the website with new and relevant data sets. If your organisation thinks it may have some robust, all Wales data that would benefit from being included on the **Daffodil** site please get in touch with Sue Lloyd-Selby, Value Wales: Sue.LloydSelby@Wales.GSI.Gov.UK for more information. To register to use the site please visit www.daffodilcymru.org.uk.

Continuing NHS Healthcare Communication Tool

This is a communication tool designed to help guide staff and the person being assessed through an initial discussion to explain the Continuing NHS Healthcare process. Continuing NHS Healthcare (CHC) is a package of care arranged and funded solely by the NHS, where it has been assessed that the person's primary need is a health need. The issue is one of need and the person's specific; diagnosis, condition, financial position, the cost of providing the required care, or its setting; do not determine eligibility. CHC is reviewed and people may move in and out of eligibility as their needs change. When a person is eligible for CHC, local authorities may still have some responsibilities including, for example, a role in assessment and review, supporting carers and meeting housing and educational needs. The Communication tool can be downloaded from <http://www.wales.nhs.uk/document/168571>

First All Wales Screening Programme to Target Men Only



Public Health Wales (PHW) are planning a screening programme for Abdominal Aortic Aneurysm (AAA) in Wales which will target men specifically when they reach their 65th year. The number of cases of abdominal aortic aneurysms has increased over recent decades, and is 6 times more common in men than women. Overall mortality from ruptured aortic aneurysm is around 85 per cent. The aorta is the main vessel carrying blood from the heart to the body. An abdominal aortic aneurysm is a swelling of the aorta within the abdomen.

Abdominal aortic aneurysm is often known as a silent killer because there are no obvious symptoms. However, when blood runs through a weakened aorta, the pressure can cause it to bulge outwards like a balloon, rupture or split. These ruptures can cause significant internal bleeding and around 85 per cent of cases will result in death. It is estimated that around 50 per cent of these deaths could be prevented by high quality screening.

Enterprising Communities Project

The Enterprising Communities project in Caerphilly Borough is funded by the Welsh Government and European Structural Funds (managed by WCVA) and delivered locally by a Wales' network of County Voluntary Councils. Joanna Fashan is the



new GAVO local Community Economic Development Officer, and is located at the GAVO offices Ystrad Mynach on the Duffryn Business Park. Joanna's role is to assist third sector organisations with becoming financially sustainable. By working with and supporting organisations, (and groups) who are aiming to become social enterprises Joanna can assist with a range of business objectives:

- The development of appropriate business plans and implementation advice
- policies and procedures
- Advice on funding
- Advice on Volunteer development
- Equip organisations to enter public procurement for the third sector

The project will work with organisations and groups who are already formed, as well as individuals who have an idea they want to develop. Support is free of charge.

For more information or to set up an initial meeting to assess; what support the project can offer and an agreed timetable for delivering support, Please contact Joanna: telephone number 01443 863540 or email Joanna.Fashan@gavowales.org.uk

Tackling Issues around Dignity Care and Respect for Older People

Caerphilly County Borough Council in collaboration with stakeholders developed a **Dignity Games web resource** that has been developed as part of the Welsh Government 'Dignity In Care' programme. There are 2 games packs which are designed to assist with tackling issues around dignity, respect and equalities. These games offer an informal, easy to use and effective way of generating discussion, challenging stereotypes and raising awareness.

The webpage allows you to download the core elements of the 2 games packs. "Snakes & Ladders Dignity Do's & Don'ts" is specifically designed with practitioners in mind. The 'Tidy Gin' games pack is for social settings or anywhere people over 50 socialise. Both resources can be following the link:

http://www.caerphilly.gov.uk/communityplanning/en/cross_themes/50plus/dignity_games.html

Consultations

Inquiry into Stroke Risk Reduction

The terms of reference for the inquiry are to examine the current provision of stroke risk reduction services and the effectiveness of Welsh Government policies in addressing any weaknesses in these services, including:

- Scrutinising the implementation of the Welsh Government's Stroke Risk Reduction Action Plan, including the extent to which action to raise public awareness of the risk factors for stroke has succeeded;
- Identifying those areas where there are particular problems in the implementation and delivery of stroke risk reduction actions;
- Considering the evidence for an a trial fibrillation screening programme being launched in Wales

The Committee welcomes responses from both individuals and organisations. If you are responding on behalf of an organisation, please provide a brief description of the role of your organisation.

Submissions should be made in writing because it is normal practice for the National Assembly to publish evidence provided to a Committee on their internet site so that it becomes part of the public record. However, they are also able to accept evidence in audio or video format. If you wish to contribute evidence, please send an electronic copy of your submission to HSCCommittee@wales.gov.uk.

Alternatively, you can submit it by post to the Committee Clerk, Health and Social Care Committee, National Assembly for Wales, Cardiff Bay, CF99 1NA. Any submissions should arrive by **Friday 16 September 2011**.

Inquiry into the Contribution of Community Pharmacy



The terms of reference for the inquiry are to examine the effectiveness of the Community Pharmacy contract to health and wellbeing services, including:

- The extent to which Health Boards have taken up the opportunities presented by the contract to extend pharmacy services through the provision of 'enhanced' services, and examples of successful schemes;
- The scale and adequacy of 'advanced' services provided by community pharmacies
- The scope for further provision of services by community pharmacies in addition to the dispensing of NHS medicines and appliances, including the potential for minor ailments schemes;
- The current and potential impact on demand for NHS services in primary and secondary care of an expansion of community pharmacy services, and any cost savings they may offer;
- Progress on work currently underway to develop community pharmacy services

The Committee welcomes responses from both individuals and organisations. If you are responding on behalf of an organisation, please provide a brief description of the role of your organisation. Generally, submissions are asked for in writing because it is normal practice for the National Assembly to publish evidence provided to a Committee on their internet site so that it becomes part of the public record. However, they are also able to accept evidence in audio or video format.

If you wish to contribute evidence, please send an electronic copy of your submission to HSCCommittee@wales.gov.uk. Alternatively, you can submit it by post to: Committee Clerk, Health and Social Care Committee, National Assembly for Wales, Cardiff Bay, CF99 1NA. Any submissions should arrive by **Friday 23 September 2011**.

Housing Benefit Reform – Supported Housing

The UK Government is committed to supporting vulnerable, older and disabled people to lead independent and active lives in the community rather than living in more institutionalised care. Housing Benefit payments for this group can be higher than for those in mainstream accommodation. However, the current rules have been in place since the mid nineties and no longer fit the way that personal care and support are now commonly delivered. These rules have become complex both to administer and understand.



This consultation seeks views on the Governments proposals to change the method by which help with rent is worked out for those who live in supported housing within the social and voluntary sector. It seeks views to inform policy development and re-design the way in which Housing Benefit helps with the higher rents sometimes faced by the elderly or those with disabilities. The public consultation applies to England, Scotland and Wales. The consultation runs until 9th October 2011. Please send your consultation responses to: Housing Benefit Team (Supported housing consultation) Department for Work and Pensions 1st Floor, Caxton House Tothill Street London SW1H 9NA E mail: HB.supportedhousing@dwp.gsi.gov.uk

If you have any queries about this consultation, or would like to receive the consultation document in a particular format, for example, large print, Braille, audio, please contact: Dave Jones Department for Work and Pensions 1st Floor, Caxton House Tothill Street London SW1H 9NA E mail: Dave.Jones@dwp.gsi.gov.uk THE full consultation document can be found on the following web link

<http://www.dwp.gov.uk/docs/consult-supported-housing.pdf>

Caerphilly Borough Consults on First Advocacy Commissioning Strategy

The Caerphilly Health, Social Care and Wellbeing Partnership, are pleased to present their first Caerphilly County Borough Adult Advocacy Commissioning Strategy. The aim of this strategy is to ensure that; all adults eligible for, or receiving health and social care Services within Caerphilly County Borough, are able to access an appropriate advocate, or advocacy service.

Advocacy' plays a vital part in supporting people to raise concerns, helping to make the appropriate choices and decisions for themselves about the service(s) they are receiving.



The Health, Social Care and Well-being Partnership invite comments on the areas for development and Action Plan set out in the Adult Advocacy Commissioning Strategy consultation document To view to document and complete the take consultation questionnaire go to

<http://www.caerphilly.gov.uk/communityplanning/en/health/strategy.htm> The closing date for the consultation is 30th September 2011.

Review of the Social Care Induction Framework in Wales-Event Wednesday 5th October, 2011, South Wales (Venue TBC) 10.30am – 3.30pm

As you may know the Social Care Induction Framework is being reviewed this financial year. The current version is mapped against NVQs that were replaced in January 2011 with QCF diploma qualifications as a result of the vocational qualification reform programme.

The event will be in the form of interactive workshops to discuss the necessary outcomes, the format, additional guidance, the needs of migrant workers and its use within early years and the childcare sector. The aim is to review and revise the framework to ensure that it is current and reflects revisions made to National Occupational Standards as well as QCF qualification development. For more information or to book a space email Gethin.white@ccwales.org.uk,

Dates for the Diary

Digital Stories of Caerphilly Miners Hospital

As part of the celebration of Caerphilly District Miners Hospital, a digital story has been developed to capture the memories of staff and patients who have played such a large part in the hospital's long history. Following the success of recent 'tea and pictures' events held in Caerphilly District Miners Hospital, a number of photographs and stories were shared which have been collated together to form a DVD for staff and patients, new and old.



The digital story will be shown at events to take place in the Post Graduate Room in The Beeches, Caerphilly District Miners Hospital. To request more information please contact Chris Hodson Aneurin Bevan Health Board on 01495 241244.

Welsh Tenants Federation Annual conference

'Destination Unknown' - What's happening to our Social Housing? 14th & 15th September 2011, Metropole Hotel, Llandrindod Wells

The conference, the first 2 day event organised solely by the WTF, will focus on three big themes central to their mission: Equality of tenure, improving housing standards and ensuring tenants have appropriate levels of engagement in decisions made about their homes and communities. Because of the economic circumstances there is huge change happening in social housing. Tenants should be a part of that process helping to make a difference by shaping the change agenda.



However, there is uncertainty about what the future holds, with welfare reforms, lack of capital finance to replace social housing and widespread changes in the way people access housing in the future it is vital that tenants have their say. With an uncertain future, these issues have helped shape the programme. Further details are available from Sharon Dean, Office Manager, Tenants Federation, tel: 01685 723922, email info@welshtenantsfed.org.uk.

World Voice Hearing Day

Dolman Theatre Newport On the 14th September 2011 between 10.30am and 3.30pm.

World Voice Hearing Day is a celebration of the acceptance of Voice Hearing and promotes recovery for those hearing voices. The event will be of interest for people experiencing voice hearing, carers, family members and anyone interested in finding out more. People will be sharing experiences through stories, poetry and artwork. Guest speakers: Hywel Davies (supporter of HVN) David Crepez-Keay (Mental Health Foundation) and others.

Entry is free (light refreshments provided) so for more information, or to book your place: please call Maria 07975 528367 or Jess 07968 822505 or email visionsandvoices.newport@gmail.com

Caerphilly Borough One Beat Showcase Event



The annual One Beat Voluntary Sector Awareness Event will take place this year on Saturday 22nd October, Ty Penallta, Caerphilly County Borough Council. Expectations are high again this year that the event will be successful in attracting organisations and residents of all ages. A number of key speakers are participating and there will be a launch of the new Community Directory.

To find out more or to book for organisations to book any remaining spaces please contact GAVO on 01443 863540

Health at Work Advice Line Wales to Continue

Following the successful initial pilot the Health at Work Advice Line Wales has been sustained and is an integral part of the Healthy Working Wales Programme of services. The Advice Line number is 0800 107 0900 and Occupational Health Nurses are available between 9am and 5pm Monday to Friday.

They will take calls from employers, employees and health professionals about any health at work related issue including Fit Note queries. A call back system operates for 'out of hours' calls. The line will be open 24 hours a day, with qualified professionals available 9-5 on weekdays. Outside of these hours a call-back service will operate. If our advisors aren't able to help you directly, they'll put you in touch with someone who can. So what advice is available?

- Screening for early signs of health related issues
- How to deal with staff experiencing mental health conditions and physical health
- Professional help on staff unable to work
- Sickness absence and attendance management
- Rehabilitation and medical intervention
- Lifestyle and well-being to maintain health



The advice and support offered will help you to improve your mental and physical well-being and assist with managing your condition at work. The support can help to enable a managed return to work which can help recovery and minimise the risk of long term absence, social exclusion and the possibility of job loss

Information on available services can be found on the website www.healthyworkingwales.com or by calling the following numbers:

- Occupational health, safety and return to work advice, through Work boost Wales call 0845 609 6006.
- Support and advice to develop health and well-being initiatives in the workplace through the Corporate Health Standard and the Small Workplace Health Award, Health at Work Advice Line Wales, help with supporting an employee with a health condition including managing back pain at work call 0800 107 0900.

ADULT ALCOHOL AUDIT SCREENING TOOL

The Adult Alcohol Audit Screening Tool is a specially devised questionnaire designed to determine how much alcohol an individual consumes, whether they are dependent on alcohol or not, if there is a dependency then the level of that dependency and any negative consequences alcohol use may have on their life.



Practitioners using the tool will find it helpful to find out exactly how much a person drinks, the impact alcohol is having on their lifestyle and any issues they may be having linked to alcohol use. Alcohol misuse is a very personal issue, there may be many issues that contribute to alcohol misuse and so depending on answers given, and if deemed necessary, the individual can be referred into a treatment or service that is most suitable for them.

The questionnaire is used by CRI Caerphilly and Blaenau Gwent Adult Alcohol Service and can offer all Tier 1 services the opportunity to train in delivering this questionnaire themselves.

Tier 1 services are services which may, through their work, come into contact with an adult with an alcohol problem including voluntary sector organisations supporting people with mental health issues, carers and older people.

Any Tier 1 service in the Caerphilly or Blaenau Gwent area can access the Adult Alcohol Audit Screening Tool free of charge. CRI Caerphilly and Blaenau Gwent Adult Alcohol Service staff will be pleased to come along to your organisation or conduct training at an agreed venue.

If you would like to find out more about the Adult Alcohol Audit Screening Tool please contact CRI for Caerphilly-02920 867065/07557 059734 or Blaenau Gwent- 01495 369822

Welsh Government Draft Budget Proposals for 2012-13

The Finance Committee is calling for information to help the committees of the National Assembly for Wales scrutinise the Welsh Government's 2012-13 draft budget proposals.

It is not known what the draft budget proposals will look like yet, as they won't be published until the 4th October this year. However, what is known is that the proposed budget will take place in a time of particular financial pressure for the public sector in Wales, and there are indicative figures available provided in the current Welsh Government's recent supplementary budget. The Committee welcomes responses from both individuals and organisations. If you are responding on behalf of an organisation, please provide a brief description of the role of your organisation.

Generally, submissions are asked for in writing because it is normal practice for the National Assembly to publish evidence provided to a Committee on the Welsh Government's internet site so that it becomes part of the public record.

If you wish to contribute evidence, please send an electronic copy of your submission to finance.comm@wales.gov.uk. Alternatively, you can submit it by post to:

Committee Clerk, Finance Committee, National Assembly for Wales, Cardiff Bay, CF99 1NA.

Submissions should arrive by **Friday 16 September 2011**

New Hospital Ysbyty Ystrad Fawr on Target for Completion



Construction on the new hospital site is due to be completed by 26th September 2011, when the keys are expected to be formally handed over to Aneurin Bevan Health Board. It will be another possibly 6-8 weeks before patients will be occupying beds as there will need to be a thorough spring clean. External landscaping is progressing with noticeably more trees planted and courtyards emerging.

The hospital will have undercroft car parking and a general car park to the east of the main building with disabled parking bays designed for both car parks. For those attending on foot there will be a bus stop and pedestrian walkway off Caerphilly Road. The next public engagement forum will be held in October for more information about the new hospital and the public engagement forum please contact Chris Hodson on 01495 241244



Bargoed TARRAGAN Project Wins Green Flag Award

Open Day at the TARRAGAN site on Wednesday 24th August between 10.00 am to 3pm. TARRAGAN have won a National Green Flag Award and the Mayor is unveiling the award at 11.00am.

The TARRAGAN Community Allotment project in Bargoed was set up to involve groups and individuals in gardening and conservation, and to promote healthier lifestyles through outdoor

Sporting twenty plots and three raised beds, the allotment allows school groups, voluntary organisations, and residents to plant organic vegetables and grow a variety of plants, including a new rose garden, on the reclaimed derelict site. Having established itself as a local landmark, the TARRAGAN project has received commendations from Caerphilly Borough Council including the Mayor's Civic Award, and was also the recipient of the 2009 Environmental Award from the voluntary sector awards in Caerphilly. TARRAGAN now seeks to further its role as a point of strong intergenerational interaction and local pride, and is competing for the Queen's MBE Award for services to the community. For more information on the Project and the open day Contact: Andy Harris Telephone: 07922547018 or email andyh442@sky.com

Revised commencement dates for the Mental Health (Wales) Measure 2010

The commencement dates of key parts of the Mental Health (Wales) Measure have been put back.

In a letter to the Chief Executives of Local Health Boards and Directors of Social Services, the Welsh Government states that:

- Part 1 of the Measure, concerning local primary mental health support services, will commence in October 2012;
- Parts 2 and 3 of the Measure, concerning assessment, care and treatment planning and care coordination within secondary mental health services, will commence in June 2012;
- Part 4 of the Measure, concerning the expansion of the independent mental health advocacy scheme under the Mental Health Act 1983, will commence in two phases. The first phase (concerning patients subject to sections 4 or 5 of the 1983 Act) will commence in January 2012. The second phase (concerning informal inpatients) will commence in April 2012.

For information on the Measure please visit the following link:

<http://www.assemblywales.org/bus-home/bus-legislation/bus-leg-measures/business-legislation-measures-mhs-2.htm>

And Finally..... On the Move



Journeys have relocated to new offices:

38 Albany Road Cardiff CF24 3RQ

There will be a grand opening of their new building in October 2011.

For more information please telephone 02920 692891 or e mail info@journeysonline.org.uk

If you have some news to share, for example; a new project, events, training opportunities please contact
Susanne Maddax, Health and Social Care Facilitator
on 01443 863540 or
susanne.maddax@gavowales.org.uk

